

Pneumatic Retractable Fittings

- Chem
- Energy
- Pharm
- Food
- Water

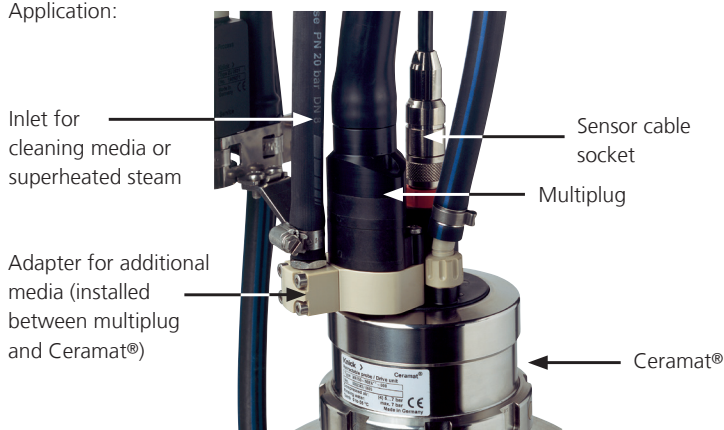
Accessories for Ceramat®

Accessories

Order No.

Adapter for additional medium

Application:



Adapter for introducing additional media, e.g. hot water or steam, directly at the retractable fitting

ZU 0655

- Material: stainless steel, 1.4571
- Pressure: max. 8 bars
- Temperature: max. 125 °C (10 min 140 °C)
- Media connection: internal G 1/4" thread
incl. 1/4" connection nipple for DN 8 hose
incl. EPDM DN 8 media pressure hose, reinforced, 5 m
incl. integrated check valves
incl. long limit switch cap
- Gaskets: FKM
EPDM
FFKM
- Assembly: screwed to multiplug at the fitting
- Fittings: Ceramat® WA 150, Ceramat® WA 160

ZU 0655/1
ZU 0655/2
ZU 0655/3



Adapter for introducing additional media, e.g. hot water, steam, or cleaning agent directly at the retractable fitting

ZU 0654

- Material: PEEK
- Pressure: max. 8 bars
- Temperature: max. 125 °C (10 min 140 °C)
- Media connection: internal G 1/4" thread
incl. 1/4" connection nipple for DN 8 hose
incl. EPDM DN 8 media pressure hose, reinforced, 5 m
incl. integrated check valves
incl. long limit switch cap
- Gaskets: FKM
EPDM
FFKM
- Assembly: screwed to multiplug at the fitting
- Fittings: Ceramat® WA 150, Ceramat® WA 160

ZU 0654/1
ZU 0654/2
ZU 0654/3

For up-to-date information, please visit www.knick.com.br

Knick >

Accessories – continued

Ceramat® mounting wrench



tool for connecting and loosening the Ceramat® drive unit

Fittings: Ceramat® WA 150, Ceramat® WA 160

Order No.

ZU 0648

Sensor mounting wrench
19 mm



tool for easy installation of the sensor, wrench size 19

Fittings: Ceramat® WA 150, Ceramat® WA 160 et al.

ZU 0647

Bail handle



bail handle for easier handling of the fitting
(pulling out the inner tube for sensor replacement),
can be latched to the drive unit

Fitting: Ceramat® WA 160

ZU 0651

Pneumatic Retractable Fittings

Chem

Energy

Pharm

Food

Water

Accessories for Ceramat®

Accessories – continued

Standard-Media Interface

connection kit for manual operation or for operation with a DCS

Order No.

ZU 0631

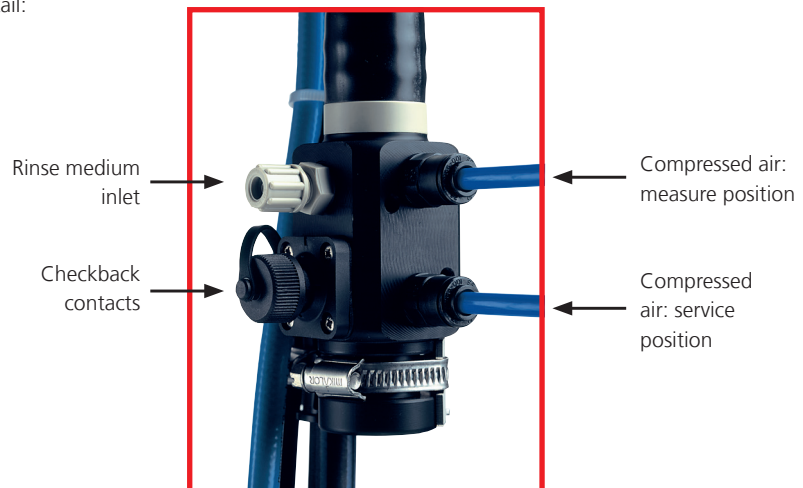
Connections: control air, movement to measure position, G 1 1/4" 4/6 mm hose connection, pressure: 4 ... 7 bars
 control air, movement to measure position, 4/6 mm hose connection, pressure: 4 ... 7 bars
 rinse medium, 4/6 mm hose connection:
 materials: PP, PEEK, FKM, PFA
 pressure: max. 6 bars, temperature: max. . 65 °C
 contacts for electric feedback of limit positions, M12 plug, rinse medium outlet, DN 8 hose, materials: EPDM reinforced

Fittings: Ceramat® WA 150, Ceramat® WA 160

Application:



Detail:



Accessories – continued

Pneumatically operated manual control valve

switch for operation on ZU 0631 Standard-Media Interface or displaced incl. wall and pipe fastener

switch positions for measuring and service

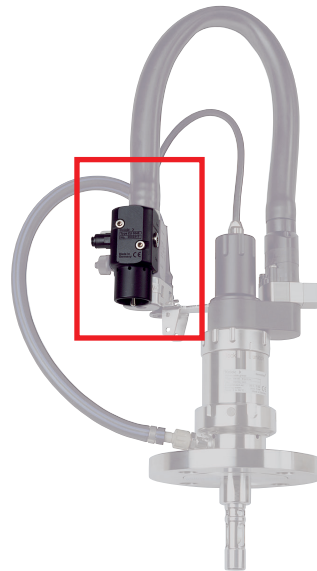
Connections: compressed air, 4/6 mm hose connection
pressure: 4 ... 7 bars

Fittings: Ceramat® WA 150, Ceramat® WA 160

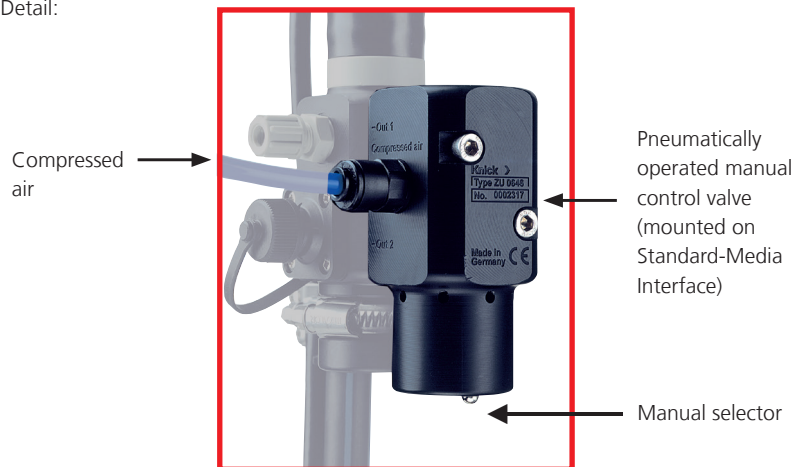
Application:

Order No.

ZU 0646



Detail:



Pneumatic Retractable Fittings

Chem

Energy

Pharm

Food

Water

Accessories for Ceramat®

Accessories – continued

Pneumatically controlled
3/8; valve for additional
medium

valve for introducing additional media, e.g. hot water or steam

Material: nickel-plated brass

Gaskets: EPDM

Connections: control connection to Unical: hose, reinforced, 5 m
connection of fitting: EPDM hose (reinforced) with
grommet, max. 8 bars

Temperature: max. 125 °C (10 min 140 °C)

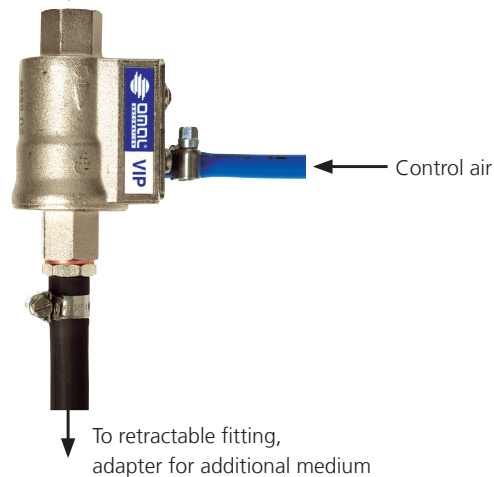
Assembly: mounting bracket (included in shipment)
adapter for additional media required, e.g. ZU 0654/x
or ZU 0655/x

Control via Unical® 9000/Uniclean® 900 requires
the „Supplementary ext. valve control kit“
(see page 312).

Fittings: Ceramat® WA 150, Ceramat® WA 160

Application:

Additional medium, input
(hot water, steam, etc.)



Air supply for pressurized
sensors



pressure reducer with pressure gage (reverse flow ventilation
from 0.8 bars, connection to fittings with pressurizable sensors)

Pressure regulator: ZU 0670/1 0,5 ... 4 bars
ZU 0670/2 1 ... 7 bars

Connection: prepared for connection to
Unical® 9000/ Uniclean® 900

Hose lengths: hose incl.: side controller 3 m, side fitting 5 m
hose, 20 m (extension for ZU 0670)

Assembly: mounting bracket (included in shipment)

Control via Unical® 9000/Uniclean® 900 requires
the „Supplementary ext. valve control kit“
(see page 312).

Fittings: Ceramat® WA 150, Ceramat® WA 160

Order No.

ZU 0669

ZU 0670/1
ZU 0670/2

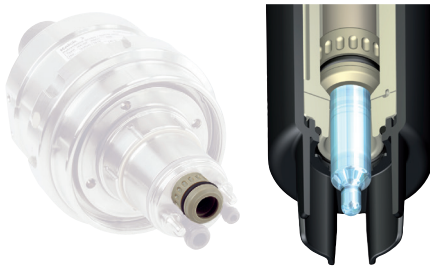
ZU 0713

For up-to-date information, please visit www.knick.com.br



Accessories – continued

Sensor socket PEEK



spare part, sealing of sensor/calibration chamber Ceramat®

Sensor socket material: PEEK

Gasket material: FKM
EPDM
FFKM
EPDM FDA
FKM (with scraper ring)
EPDM (with scraper ring)
FFKM (with scraper ring)

Fittings: Ceramat® WA 150
Ceramat® WA 160

Order No.

ZU 0616
ZU 0617
ZU 0618
ZU 0619
ZU 0705
ZU 0706
ZU 0707

Sensor socket PVDF



spare part, sealing of sensor/calibration chamber Ceramat®

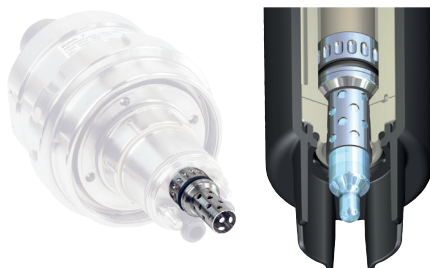
Sensor socket material: PVDF

Gasket material: FKM
EPDM
FFKM
EPDM FDA

Fittings: Ceramat® WA 150
Ceramat® WA 160

ZU 0620
ZU 0621
ZU 0622
ZU 0623

Sensor socket long,
1.4571 stainless steel



spare part, sensor socket with sensor protection, removing incrustations from the Ceramat® sensor opening during probe movement

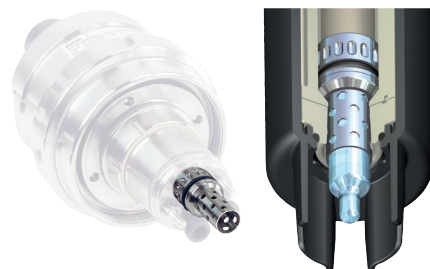
Sensor socket material: stainless steel, 1.4571

Gasket material: FKM
EPDM
FFKM

Fittings: Ceramat® WA 150
Ceramat® WA 160

ZU 0672/A
ZU 0672/B
ZU 0672/C

Sensor socket long,
Hastelloy C22



spare part, sensor socket with sensor protection, removing incrustations from the Ceramat® sensor opening during probe movement

Sensor socket material: Hastelloy C22

Gasket material: FKM
EPDM
FFKM

Fittings: Ceramat® WA 150
Ceramat® WA 160

ZU 0673/A
ZU 0673/B
ZU 0673/C

Pneumatic Retractable Fittings

Chem

Energy

Pharm

Food

Water

Accessories for Ceramat®

Accessories – continued

Sensor socket, full sensor protection, Hastelloy C22



spare part, sensor socket with sensor protection (full sensor protection), removing incrustations from the Ceramat® sensor opening during probe movement

Sensor socket material: Hastelloy C22

Gasket material: FKM
EPDM
FFKM

Fittings: Ceramat® WA 150
Ceramat® WA 160

Order No.

ZU 0808/A
ZU 0808/B
ZU 0808/C

Sensor socket, full sensor protection



spare part, sensor socket with sensor protection (full sensor protection), removing incrustations from the Ceramat® sensor opening during probe movement

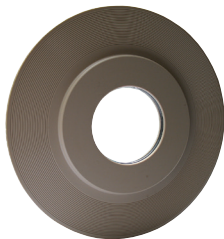
Sensor socket material: stainless steel, 1.4571

Gasket material: FKM
EPDM
FFKM

Fittings: Ceramat® WA 150
Ceramat® WA 160

ZU 0820/A
ZU 0820/B
ZU 0820/C

Flange protector DN 80



protection of process adaptation flange, DN 80, 1.4571 steel, against aggressive media

Material: PEEK
PVDF

Thickness: 4 mm

Gasket: FKM O-ring – sheathed with PFA

Fittings: Ceramat® WA 150

ZU 0595
ZU 0596

Flange protector DN 100



protection of process adaptation flange, DN 100, 1.4571 steel, against aggressive media

Sensor socket material: PEEK
PVDF

Thickness: 4 mm

Gasket: FKM O-ring – sheathed with PFA

Fittings: Ceramat® WA 150

ZU 0597
ZU 0598

For up-to-date information, please visit www.knick.com.br

Isolation Amplifiers
Transmitters

Indicators

Process Analytics

Portable Meters

Laboratory Meters

Sensors

Fittings

